

Good Shepherd Health System and Immuware

A STRATEGIC SHIFT TOWARDS ENHANCED EMPLOYEE HEALTH

Good Shepherd Health Care System in Oregon significantly enhanced its employee health management by strategically adopting Immuware, leading to streamlined workflows and a safer work environment for its dedicated staff. Integral to their mission of providing exceptional community care is the health and well-being of their employees. Leading their efforts in this crucial area is Laurie Schulz, a seasoned registered nurse who transitioned from a long and impactful career in bedside medical-surgical nursing to managing infection prevention and employee health at the system.



Ultimately, Immuware has made it easier for us to stay organized and on task, it's user-friendly for our staff, and it requires significantly less maintenance than our previous system, giving us back valuable time in our day.

Laurie Schulz

Registered Nurse

Good Shepherd Health Care System

Industry

Healthcare

Location

NE Oregon

Number of Employees

1,450



THE CHALLENGE

Good Shepherd, like many healthcare organizations, faced challenges with its existing on-premise software. While it provided a repository for all their employee health records, it presented limitations when specifically addressing the nuanced needs of employee health management, particularly in areas like proactive compliance communications, streamlined documentation for employee health events, and efficient tracking of compliance requirements.

Reflecting on the limitations of their previous system, Laurie Schulz noted, "We did have a system we were using, and I could tell right from the moment I was introduced to it that we would be looking at something different. It was very dated and simply didn't offer all the functionalities we truly needed to effectively support our employees' health and safety."

THE SOLUTION

To overcome these limitations and proactively enhance their employee health services, Good Shepherd Health Care System chose Immuware. Immuware offered a specialized platform designed to streamline employee health workflows and improve data management, directly addressing the challenges of inefficient documentation. Its focus on areas like immunization tracking and exposure management enhanced the system's ability to proactively protect its workforce, while features for regulatory compliance aligned directly with Good Shepherd's goals for a more efficient and effective employee health program.

As Laurie Schulz highlighted the tangible improvements, "We've turned on a lot of the notifications for essential processes like Respirator Fit testing, the annual influenza vaccine, and tuberculosis surveillance screening, among other things. So yes, it has very much streamlined and improved our workflows for sure."

THE RESULTS

Since implementing Immuware, Good Shepherd has experienced significant improvements in managing employee health. The platform has streamlined documentation processes, making it easier to record and track employee health events, leading to increased efficiency and a notable reduction in administrative time. Furthermore, Immuware's capabilities in integrating with the state immunization registry and their lab vendor have significantly enhanced data accuracy and eliminated manual data entry and tracking. The ability to efficiently manage these critical areas has further supported Good Shepherd's dedicated staff. In conclusion, Good Shepherd Health Care System's strategic adoption of Immuware represents a significant step towards its mission of providing exceptional care by ensuring the health and well-being of its most valuable asset: its employees. As Laurie Schulz succinctly summarized the positive impact, "Ultimately, Immuware has made it easier for us to stay organized and on task, it's user-friendly for our staff, and it requires significantly less maintenance than our previous system, giving us back valuable time in our day."



About Good Shepherd Health System

Good Shepherd Health Care System is a growing, independent healthcare provider in Northeast Oregon, serving over 75,000 patients with a comprehensive range of services. Their commitment to high-quality care is demonstrated by their DNV accreditation and recognition as a Top 100 Critical Access Hospital. Good Shepherd offers both inpatient and outpatient care, including a Level 3 Trauma Center, extensive specialty and primary care services, and community support through its Health Foundation.



About Immuware

Immuware by Propelus provides innovative solutions for employee health professionals to streamline compliance processes by up to 40 percent. From onboarding to annual compliance, hospitals and health systems can benefit from faster compliance acceleration. Purpose built for healthcare organizations, Immuware offers automation capabilities to streamline and monitor immunizations, screenings, surveillance, injuries and illnesses, while also providing compliance reporting within a single platform.

Learn more about Immuware at immuware.com and www.propelus.com.

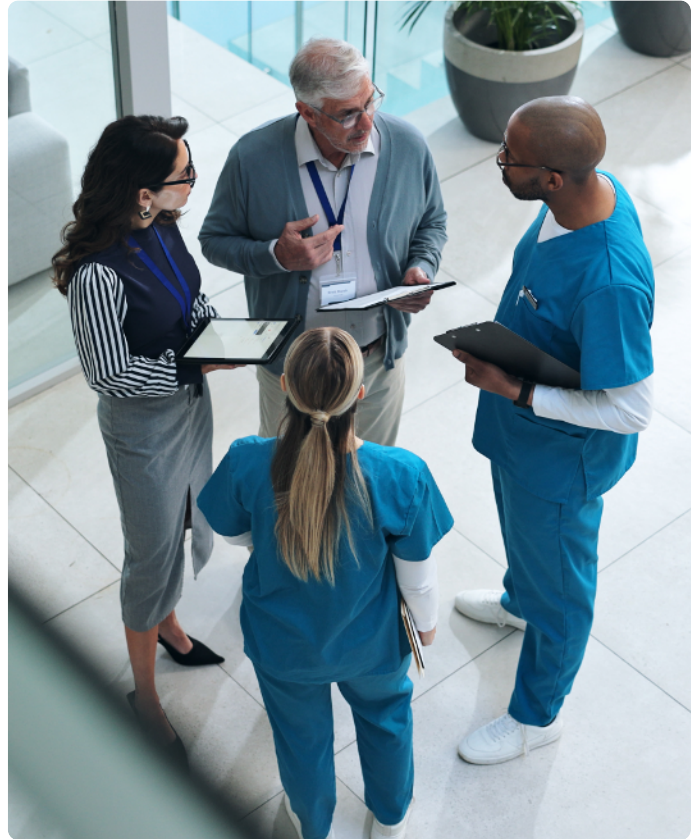


THE SOLUTION

To overcome these limitations and proactively enhance their employee health services, Good Shepherd Health Care System chose Immuware.

Immuware offered a specialized platform designed to streamline employee health workflows and improve data management, directly addressing the challenges of inefficient documentation. Its focus on areas like immunization tracking and exposure management enhanced the system's ability to proactively protect its workforce, while features for regulatory compliance aligned directly with Good Shepherd's goals for a more efficient and effective employee health program.

As Laurie Schulz highlighted the tangible improvements, "We've turned on a lot of the notifications for essential processes like Respirator Fit testing, the annual influenza vaccine, and tuberculosis surveillance screening, among other things. So yes, it has very much streamlined and improved our workflows for sure."



THE RESULTS

Since implementing Immuware, Good Shepherd has experienced significant improvements in managing employee health. The platform has streamlined documentation processes, making it easier to record and track employee health events, leading to increased efficiency and a notable reduction in administrative time. Furthermore, Immuware's capabilities in integrating with the state immunization registry and their lab vendor have significantly enhanced data accuracy and eliminated manual data entry and tracking. The ability to efficiently manage these critical areas has further supported Good Shepherd's dedicated staff.



SUMMARY

In conclusion, Good Shepherd Health Care System's strategic adoption of Immuware represents a significant step towards its mission of providing exceptional care by ensuring the health and well-being of its most valuable asset: its employees. As Laurie Schulz succinctly summarized the positive impact, "Ultimately, Immuware has made it easier for us to stay organized and on task, it's user-friendly for our staff, and it requires significantly less maintenance than our previous system, giving us back valuable time in our day."

- ✓ **Streamlined documentation processes**
- ✓ **Reduction in administrative time**
- ✓ **Enhanced data accuracy**
- ✓ **Eliminated manual data entry and tracking**



About Good Shepherd Health System

Good Shepherd Health Care System is a growing, independent healthcare provider in Northeast Oregon, serving over 75,000 patients with a comprehensive range of services. Their commitment to high-quality care is demonstrated by their DNV accreditation and recognition as a Top 100 Critical Access Hospital. Good Shepherd offers both inpatient and outpatient care, including a Level 3 Trauma Center, extensive specialty and primary care services, and community support through its Health Foundation.



About Immuware

Critical to the Propelus Total Professional Management platform, Immuware simplifies workforce health and safety compliance management— at scale.

In an increasingly complex federal, state, and local regulatory environment, Immuware provides the most configurable and comprehensive vaccination management software, illness and injury tracking, and compliance reporting – purpose-built to meet the ever-changing mandates required of employers today.

Our innovative technology, vital data, and unparalleled strategic partnerships power our nation's critical compliance programs - for a happier workforce, better operations – and safer communities.

Learn more about Immuware at immuware.com and www.propelus.com.

